



In this issue...

The Record Breaker.

Hilti TE 1000 AVR

Hilti Breakers, Breaking the Rules in Riyadh

Hilti HUS3 Undercut screw anchor, the Anchor Revolution

Hilti PR 2-HS a 360° difference rotating laser

Hilti DX 2 powder actuated tool, ONE FOR ALL

Customer engages with Hilti
Hilti Logistics, strong service in KSA

Short News

Hilti provides breaking force for your projects.

Hilti. Outperform. Outlast.



Hilti Breaker TE 1000



Hilti new wave chisels



Powder-actuated tool
DX 2



Hilti HUS3 Anchor

Applications

- Demolition of concrete and masonry, working at floor level or below waist level.
- Corrective chiseling such as adjustments to door and window openings.
- Penetrations for pipes, air ducts and cables.
- Renovation of floors of all kinds.
- Special applications such as floor tile removal, bushing and compacting.

Advantages

- Powerful demolition performance thanks to high impact energy.
- Symmetrical form with new grip design for perfect handling.
- Maintenance-free, brushless SR motor and triple-chamber lubrication system for longer service intervals and longer lifetime.

Highlights

The second generation Hilti TE 1000-AVR breaks through tough concrete and boasts a remarkable 50% demolition power increase. Featuring Hilti's HiDrive technology and delivering the highest output per day, it's packed with all the power you need for tough demolition work with the lowest, unmatched vibration, thanks to AVR (Active Vibration Reduction).

The record breaker. Hilti TE 1000-AVR.



AVR HI DRIVE
TECHNOLOGY

OUTPERFORM

Powerful output: 1750 W

HIGHEST Impact energy: 26 J

LOWEST Vibration: 5 m/s²

OUTLAST

SR Brushless motor

3 Lubrication chambers



Corrective chiseling such as adjustments to door and window openings.



Demolishing concrete and masonry at floor level or below waist level.



Removing tiles, bushing and compacting.

Full breakers portfolio covering all applications.

Meet the new TE 1000-AVR, featuring HiDrive.
The world's strongest 12 kg breaker has arrived.
And with it, HiDrive technology: world class Hilti engineering at its best for the utmost in performance and longevity.

HILTI	2 Years
LIFETIME SERVICE™	NO COSTS
Lifetime	Lifetime
REPAIR COST LIMIT	MANUFACTURER'S WARRANTY

Launch May 2015

<p>TE 300</p> <ul style="list-style-type: none"> • Wall breaking • Construction <p>3 Kg</p> <p>Chipping</p>	<p>TE 500</p> <ul style="list-style-type: none"> • Wall breaking • Mechanical & Electrical <p>5 Kg</p> <p>Chiseling</p>	<p>TE 700</p> <ul style="list-style-type: none"> • Wall breaking • Construction <p>7 Kg</p>	<p>TE 800</p> <ul style="list-style-type: none"> • Floor / Wall breaking • Construction <p>10 Kg</p> <p>HI DRIVE TECHNOLOGY</p> <p>Demolition</p>	<p>TE 1000</p> <ul style="list-style-type: none"> • Floor breaking • Construction <p>12 Kg</p> <p>HI DRIVE TECHNOLOGY</p>	<p>TE 1500</p> <ul style="list-style-type: none"> • Floor breaking • Construction <p>15 Kg</p>	<p>TE 3000</p> <ul style="list-style-type: none"> • Floor breaking • Civil&Construction <p>30 Kg</p> <p>Heavy Demolition</p>
--	--	---	---	--	--	---

Hilti Standard Chisels.

Competitive solution for customers who do applications on surfaces or on abrasive material (masonry/brick/stone).


1+1=3
Total performance.
Hilti tools + Hilti accessories.



Hilti wave Chisels.

Superior solution for customers who do intensive demolition on thick slab and who are focused on top productivity (high performance with self-sharpening).



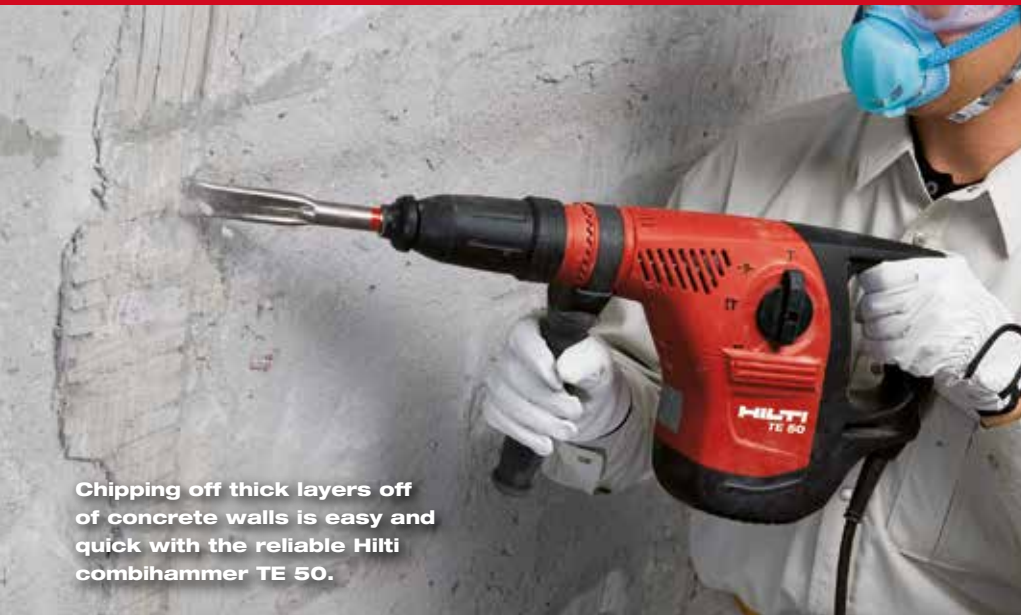


Al-Shobeily project to turn an apartments building to 4 star Hotel in Riyadh.

Hilti Breakers... Breaking the Rules.

Hilti Saudi Arabia is also present in mid projects around the kingdom. Abdallah Al Shobeily is a company that has recently started a renovation project for one of their buildings, turning it from an apartments building to a 4 star Hotel in Riyadh's Olaya district.

Abdallah Al Shobeily is a Saudi Real Estate Company, part of Al Shobeily Group. Their Head Office is in Riyadh and they have their own contracting department for their own needs. Before meeting Hilti they were using normally subcontractors, but now they save money doing more applications themselves with Hilti material.



Chipping off thick layers off of concrete walls is easy and quick with the reliable Hilti combihammer TE 50.

The project started 6 months ago and it will finish in 1 year from now. Akram Helou is Hilti's account manager who is handling Al-Shobeily. He met the project manager Mr. Alhussainy Abdul Aziz, who explained that they're facing difficulties breaking the concrete slabs of the floors with air drive breakers. The air compressors need high maintenance and they're not easy to move between the floors.

Akram performed a demo with the Hilti combihammer TE 50 & breaker TE 1500 in front of the customer explaining the value of the Hilti breakers. They don't need to use gas or any sort of fuel to work with, only

electricity power supply. They're easy to move between the floors and they deliver a high performance together with the new Hilti chisels. Hilti tools come along with the Hilti lifetime service, 2 years no cost, which was also of great advantage for the customer.

Al-Shobeily was highly satisfied with the performance of the breakers and the chisels. They ordered the combihammer TE 50, and breakers TE 1000 & TE 1500 with inserts. They even started to work with other Hilti products such as direct fastening systems for wall ties, the Hilti diamond cutter DCH 300 and Hilti chemical anchor HIT HY-200 for rebaring. ■



Working on site with the Hilti breaker TE 1500 saves time and efforts compared to air systems.

Customer testimonial



Mr. Alhussainy Abdul Aziz, project manager for **Abdallah al Shobeily contracting company**.

What were your company's needs for the application?

Breaking floor slabs and walls for remodeling, chipping off thick layers of concrete walls throughout the building as part of the renovation plans.

The challenges were many, examples of which:

- Relying heavily on hiring subcontractors for simple one-man/one-tool jobs if done correctly with the right tool and inserts.
- Very high running costs such as rentals, subcontractor contracts, with no assets left at the end.
- Difficulties in supervising the more accurate detailed breaking and chipping jobs done by subcontractors.

Why did you choose the Hilti solution?

- Immediate improvement in the application in regards to time and efficiency.
- Visible, measurable savings as soon as we cut back on the use of subcontracts for simple jobs and Equipment Rentals.
- Ease and simplicity in doing the job after the trainings and on-site demonstrations done by Hilti.

Are you satisfied with Hilti's contribution?

We are highly satisfied, the most interesting part is that prices were expected to be higher than that.

Applications

- Safety relevant post-installed through fastenings in cracked and non-cracked concrete
- Static, quasi-static and seismic loading
- Railings, balustrades
- Steel beams and structural steel
- Facades, curtain walls
- Machines fastening and conveyors
- Racking
- Heavy mechanical installation systems
- Ventilation & air conditioning
- Cable trays

Advantages

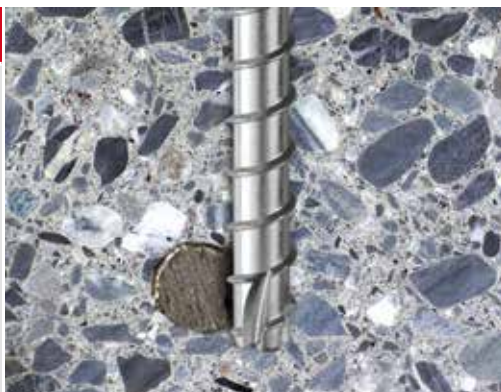
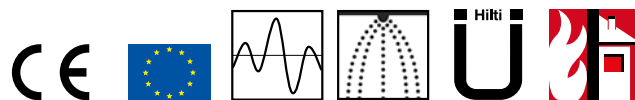
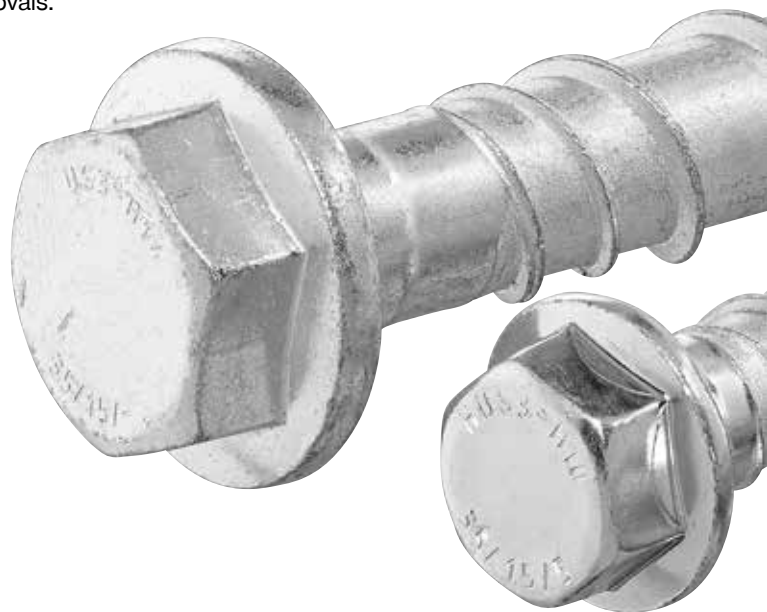
- Load values equal or better than metal expansion anchors under all concrete conditions
- Highest load values in combination with smallest edge and space distances
- Flexibility with 3 approved embedment depths
- Perfect finish with hexagonal and countersunk heads
- Cutting edges ensure very good setting behavior even in critical conditions (worn out drill bits, high strength concrete)
- Hilti Profis software for design including Hilti Profis Railing

Highlights

The new HUS3 combines a mechanical interlock with a self-locking effect under loading, which produces the highest loads. The Hilti HUS3 is robust and reliable even under the most challenging conditions.

Hilti HUS3 Undercut screw anchor. The anchor revolution.

The next evolution of undercut anchors has arrived. And with it, a revolution in your design. The new HUS3 opens a whole new world of design flexibility while delivering the highest technical performance and best in class approvals.



Extreme robustness even in case of contacts with reinforcements.



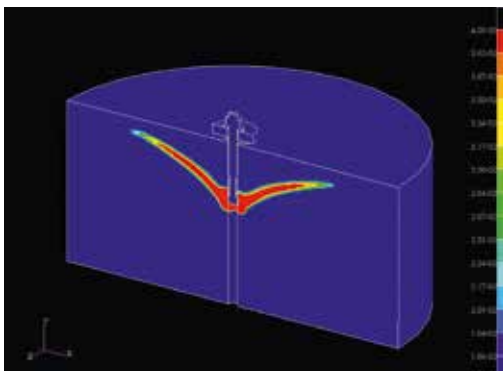
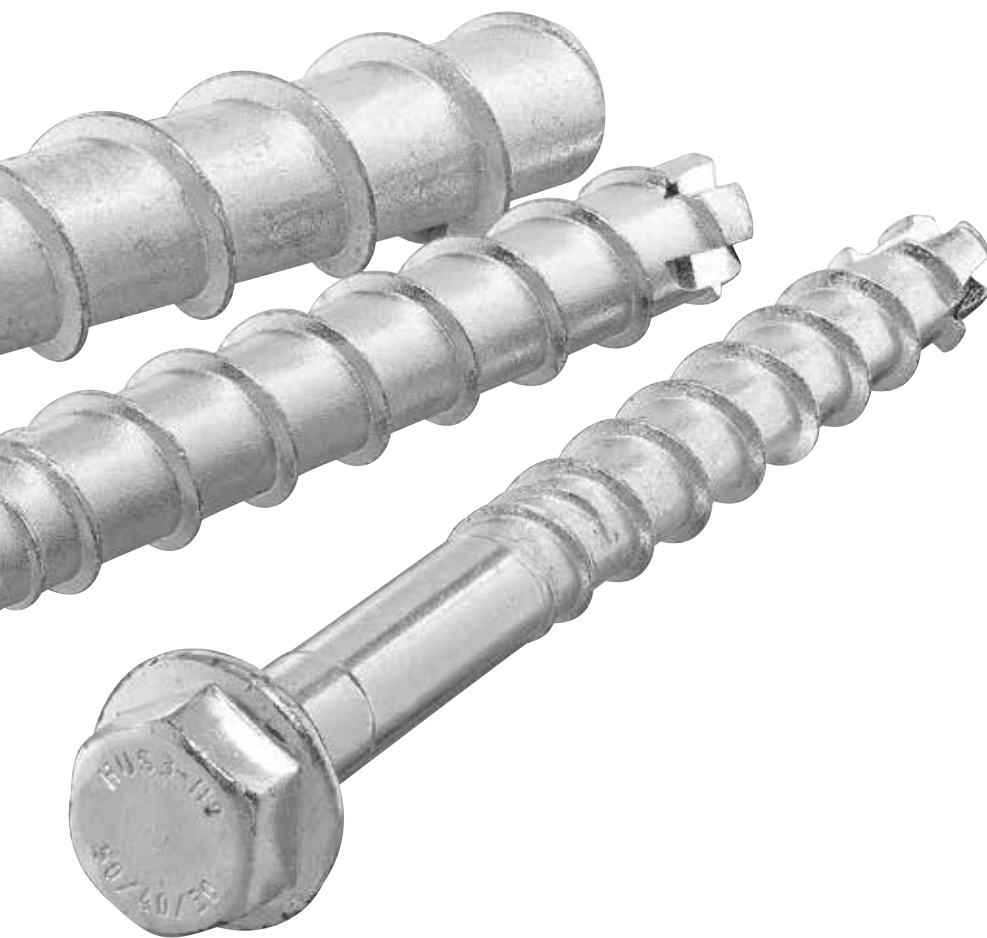
Cast-in Rebar.

High powered innovation.

Introducing HUS3: Hilti's third generation of self-locking, mechanical interlock screws. It offers reliable load transfers in varying strengths of cracked and non-cracked concrete as well as hollow core slabs and masonry. The HUS3 raises the bar in anchor innovation.

The leading anchor design software.

PROFIS Anchor makes anchor selection and design faster, safer and more reliable. Special design models based on Hilti's many years of experience allow the designer to find reliable solutions for additional applications not yet addressed within building codes and regulations. Features like the interactive 3D interface and the exclusive Multiple Load Case Calculations help the designer cut unnecessary work steps and save valuable time.



Concrete strains with HUS3.

HUS Portfolio overview

Head Configuration	6	8	10	14
HUS3-H	40-120 mm	55-150 mm	60-280 mm	75-150 mm
HUS3-C	-	65-85 mm	70-100 mm	-
HUSF-HF	-	-	60-110 mm	75-100 mm
HUS-HR	35-70 mm	55-105 mm	65-130 mm	80-135 mm
HUS-CR	-	65-95 mm	75-105 mm	-
HUS-P	40-80 mm	-	-	-
HUS-I	35-55 mm/M8-M10			
HUS-A	35-55 mm/M8-M10			

We reserve the right to make technical changes.

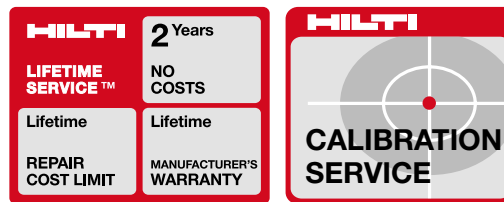
Applications

- Excavation.
- Transferring and checking reference heights.
- Leveling formwork and pouring concrete.
- Setting out slopes.

Advantages

- One button, one function makes the tool extremely easy to use.
- Built to last – newly designed shock-absorbing handles and receiver holder as well as the rugged IP 66 protection housing provide the most reliable performance in the toughest jobsites environment (MIL-STD-810G).
- Unaffected by the sun and other light sources thanks to Pulse Power technology.
- Digital measurement indicates the user precisely how much the measurement deviates from the target value.
- Single manual slope mode at up to 60% using the PRA 79 slope adapter.
- Extended 12 cm laser receiver window for quick detection of the laser beam over the entire working range.

A 360° difference. PR 2-HS Rotating Laser.



PULSE III POWER

Highlights

Hilti Pulse Power works with up to 1 million impulses per second allowing for highly reliable readings even under the most difficult conditions.



PR 2 HS is not affected by the sun or any light source.



One button, one function makes the tool extremely easy to use .

Hilti PR 2-HS

Rotating Laser



Featuring a shock-absorbing casing, the Hilti PR 2-HS Rotating Laser is built to withstand the harshest jobsite conditions. Simple function buttons make this tool incredibly user friendly, and Hilti Pulse Power technology allows highly reliable readings, even in bright light. Whether setting slopes, transferring heights or leveling, the Hilti PR 2-HS Rotating Laser is the right tool for your job.

Outperform.

- Simple and easy to use.
- Best-in-class leveling time.
- Drop-resistant from standard working height.

Outlast.

- Shock absorbent casing.
- Resistant to water and dust in typical jobsite conditions.
- No-Cost Coverage for 2 years with Hilti Lifetime Service.



Checking levels when pouring concrete.

PR 2 HS Portfolio overview

Technical Data	PR 2-HS
Accuracy at 75° F (24° C)	± 0.02 inch at 32.8 ft (± 0.5 mm at 10 m)
Operating range with laser receiver	Diameter: 6 ft – 2000 ft (2 – 600 m)
Battery life at 73° F (23° C)	Li-Ion rechargeable (tool): > 30 hours
Laser class	635 nm, class 2 (IEC 825-1), class II (FDA 21 CFR)
Protection class	IP 66 as per IEC 60529
Max operating temperature	122° F (50° C)

We reserve the right to make technical changes.

Applications

- Attaching kicker plate to concrete
- Fixing steel plate
- Fastening steel wall ties to steel or concrete
- Attaching drywall track to concrete
- Fastening electrical cable holders to concrete
- Attaching wire mesh to concrete
- Nailing wood wire to steel
- And more!

Advantages

- Easy to use and maintain
- Compact, sleek design allows easy access to narrow spaces
- Powerful, reliable performance
- Consistent energy output over lifetime
- Lifetime service and repair warranties
- Hilti on-site support and training

Highlights

- Durable metal housing
- High driving energy
- Ergonomically designed grip and tool nose
- Covers a wide variety of applications
- Truly cordless and works in all weather conditions

Hilti DX 2 powder actuated tool. One for all.



HILTI	2 Years
LIFETIME SERVICE™	NO COSTS
Lifetime	Lifetime
REPAIR COST LIMIT	MANUFACTURER'S WARRANTY



Fastening wall tie to concrete.



Fastening wood to concrete (e.g. formwork).



Fixing membrane to concrete



Always ready. Always on.

Having the right tool can make a huge impact on your productivity, especially for repetitive applications. Built with comfort, portability, and performance in mind, the DX 2 is ready to take on any jobsite challenge. It's powder-actuated, making it truly cordless, so it's always ready, always on, regardless of weather conditions.

Durability meets unrivalled performance:

Introducing the new Hilti DX 2 powder actuated tool. Whether fastening to concrete or steel, the DX 2 drives a wide range of nails and takes on a variety of jobs with speed and ease. The DX 2 performs under all weather conditions and is sleekly designed to access hard-to-reach corners. Improved ergonomics makes it better balanced and comfortable to use, while its compact design makes it the ultimate in portability. Durable and impact resistant, the DX 2 is virtually unbreakable. From the first nail to the last, consistent, reliable performance is yours with the Hilti DX 2.

1+1=3

Total performance.

Hilti tools + Hilti accessories.

Hilti tools, drill bits and chisels are developed together, tested together and perfectly matched to each other to ensure that you benefit in full from the Hilti Power Effect – superior system performance that adds up to much more than just the sum of its components.

Technical data

Power (max.)	245 J
Fastener intake	Single nails
Dimensions (LxWxH)	345 x 50 x 157 mm
Weight	2.4 kg
Max. fastener driving rate	450 / h
Contact pressure range	160 – 190 N
Certificates	CE

We reserve the right to make technical changes.

Substations and power transmission lines are one important business area of Al-Babtain



Al-Babtain engages with Hilti.

Al-Babtain Contracting is a leading Saudi manufacturer and contracting company that started a successful business journey with Hilti, not only because of Hilti's well-known product quality, but also for its Account Managers, the engineering support, the presence on site, its sales channel system and other top services in KSA.

Riyadh's Al-Babtain is one of the most successful and reputed manufacturer of Power & Telecommunication products to local and international markets. The company is active in the area of Outdoor Lighting (Poles, High Mast & Luminaires), Transmission and Distribution (Transmission Tower, Monopoles, Distribution Poles & Testing Services), Telecommunications (Towers

& Monopoles), Structural Steel and Galvanizing Services.

With its production base in Riyadh (KSA) and Cairo (Egypt), Al- Babtain is maintaining the high level of quality & reliability of its products; this is due to the emphasis on design and manufacturing to international standard by acquiring some of the best technologies from leading companies in the world, together with technologies developed in its own facilities.

Since 2014 Hilti started to be in contact regularly with Al-Babtain through its Sales Engineer Mahmoud Shalaby with technical & engineering support from Ahmed Al Mohammadi, from Hilti Energy Division.

The first challenge was to find the right anchor system for equipment fixing in substations. Based on the customer's drawings, Hilti calculated the best anchor solution through its innovative PROFIS software. Hilti offered the complete fixing system, the chemical anchors HVU with anchor rods HIT-V-F and injectable mortars RE500 and HY200, and the diamond drilling tool DD-160 with its core bits, because the base material was reinforced concrete. The solution worked as per the



customer's expectations as it saved a great deal of time and cost.

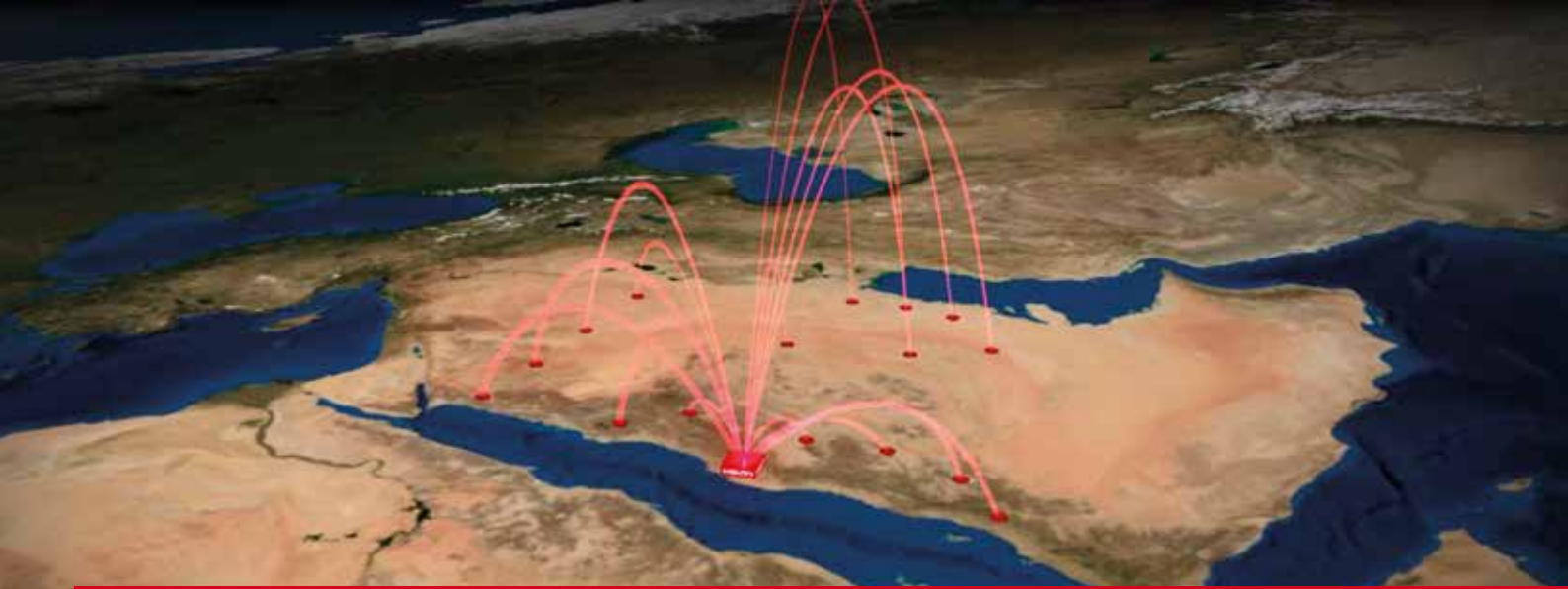
The second challenge was to introduce Hilti's Firestop systems. The Hilti representatives did a complete seminar about substation applications. Then a firestop training was performed on site, together with the calculation of a bill of quantities for the cable tray and cable penetrations sealing application. Afterwards Al-Babtain started to use

successfully Hilti's firestop sealant FS-ONE.

Al-Babtain continued to trust Hilti for further applications ordering different Hilti product types, like the combihammer TE-60, the laser range meter PD 5, the cordless impact wrench SIW 22T-A, etc. The customer uses several Hilti channels: Customer Service and Riyadh's Hilti Center, because of its convenience. ■



From right to left: Eng. Mamdoh Abdelkhaleq, Civil business unit manager, Hilti's Sales Engineer Mahmoud Shalaby and Eng. Mohamed ashraf, Projects coordinator engineer.



**Delivery in Main Cities in 48Hrs
72Hrs in Remote Locations**

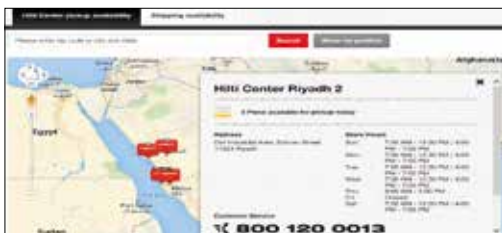
Hilti Logistics. Strong service in KSA.

Constantly changing requirements, increasing complexity in Saudi Arabia and high product diversity demand great flexibility and the ability to react quickly.



General logistics.

You choose where you want the items to be delivered - to your company's address, construction site or even to a Hilti Center. Your order will leave our warehouse the same day and it will take 24/48/72h depending on your location, including remote areas.



Click and check.

Check easily the Hilti Center product availability in Hilti on Line. Just select the product that you are interested in and click on a KSA map in the nearest Hilti Center and you'll get the stock in each location. Save your time!



You need it. We have it.

We have a national central warehouse located in Jeddah with support from Hilti Regional Logistic Center in Dubai and more than 5,000 pallet positions for more than 2,100 deliveries monthly. The total stock value in Hilti Saudi Arabia is more than 30 Mio. SAR, out of it 10% are spare parts. Hilti invests to serve the customers quickly and better.



Hilti Kick off Meeting 2015

Hilti Saudi Arabia had their Kick Off 2015 meeting, held in King Abdullah Economic city (Bay La Sun Hotel) in Jeddah. All 280 employees and guests gathered together to celebrate the successes of 2014 and discussed the plans of 2015. The event lasted for 2 days including awards ceremonies and evening activities (Adventure Island), in the first day, activity booths and setting the new targets for 2015 in the second day. Hilti Saudi Arabia continues to invest in the country, increasing the number of employees, especially Saudis, and improving the level of services.



The new Hilti electric wall saw in Lamar project

Hilti specialists performed the first demonstration in Saudi Arabia of the Hilti electric wall saw DS-TS20 E. The Diamond Saw Contracting Company, specialized in diamond demolition, wanted to remove the crane concrete foundation, sawing at a depth of 30 cm. Hilti Saudi Arabia has recently introduced its new fully electric wall saw DS-TS20-E for cutting reinforced concrete with diamond wall saw blades. The main advantage of this wall saw is that it's fully electric, this means there's no need for hydraulic devices that make the cut difficult and slow. It's functioning is easy and high performing thanks to its electronics and pneumatic drive.



Yapi Merkezi goes online with Hilti



Hilti's representative in Al-Madinah Amir Al-Hajj introduced our new Hilti online to Yapi Merkezi company, explaining the benefits & simplicity to them of its use, then he submitted the first order step by step with the customer and supported them ongoing. Yapi Merkezi started to place orders directly through Hilti online, they're getting all the needed enquiries (quotations, availability, tracking orders, orders history, invoices copy and technical data) on the spot at any time, saving a lot of time and opening the way for new applications to focus.



Hilti trains Riyadh Metro contractors in Health & Safety

Hilti is giving Health & Safety training for Riyadh Metro contractors (BACS, FAST and ANM consortiums). Hilti engineers train continuously 25 trainees each time (500 trainees till now) including engineers, foremen and workers. The health and safety training covers all the Hilti features to reduce the risks of vibration, noise, working in heights and dust. Hilti is the leading company in the construction tool industry in providing the most innovative solutions in H&S. The trainings started in last February and are still going on.

Hilti Centres: Kingdom of Saudi Arabia

Kilo 14, King Fahd Street
Saad Abukhadra Building
21454, Jeddah
Phone 800 120 0013

King Abdul Aziz Street
11323, Riyadh
Phone +966 11 460 8974

Baladia Street
Al Shoaili Center
21454, Jeddah
Phone +966 12 667 8475

Old Industrial Area
Dahran street, Bawardi building
11323, Riyadh
Phone +966 11 447 5766

Old Jeddah Road, Imam Bukhari Street
Al Sultan Building
24231, Makkah
Phone +966 12 549 0773

Khobar-Dammam Highway
Dammam 1st Industrial area, Aba Hussain Building
31952, Khobar
Phone +966 13 810 0285

Jeddah Road – King Abdul-Aziz street
Mohammed AL-Juhani Building
41911, Yanbu
Phone +966 14 322 4661

1st Industrial City, street #114
Near Al Bayan Institute
31962, Jubail
Phone +966 13 340 4872

Abi- Zar Street
Souk Ohd Commercial Center, P.O. Box 3400
3400, Madina
Phone +966 14 835 1914

King Fahd Street
Next to Industrial Vocation Institute
31982, Hofuf
Phone +966 13 531 3671

Hilti. Outperform. Outlast.

Hilti Saudi Arabia
for Construction Tools

King Abdul Aziz Street
P.O. Box 5287 | 1Riyadh 11422
Toll Free Phone 8001200013
Toll Free Fax 8002445554
Sa.customerservice@hilti.com
www.hilti.sa
CR 1010278712
LLC Paid up capital SAR 39,230,000

شركة هيلتي العربية السعودية

لأدوات البناء

شارع الملك عبد العزيز

صندوق بريد 5287 الرياض 11422

الهاتف المجاني 8001200013

الفاكس المجاني 8002445554

Sa.customerservice@hilti.com

www.hilti.sa

سجل تجاري رقم 1010278712

شركة ذات مسؤولية محدودة - رأس المال المدفوع 39,230,000 ريال سعودي