



In this issue...

First cordless combihammer ever,
Hilti TE 30-A36

Saudi Oger trusts Hilti in National
Guard project

Now with torque bar, Hilti stud
anchor range

Earthing solution from Hilti in
Haramain railway

Hilti laser detection family, save
time and money!

The presence of Hilti in remote
sites in KSA

Hilti Lifetime Service

Short News

**First cordless combihammer ever,
Hilti TE 30-A36, same performance
without cables, the whole day long.**

Hilti. Outperform. Outlast.



TE 30-A36
Cordless combihammer



HSA
Stud anchor



PS 30
Laser detection tool



DX 351 BT
Power-actuated tool

Cordless combihammer

Hilti TE 30 A-36

HILTI

Applications

- Drilling anchors holes and through-holes in the 4-28 mm diameter range in concrete and masonry; recommended range 8-20 mm
- Drilling for non-structural rebar doweling, diameter range 4-28 mm recommended range 8-20 mm
- Corrective chiseling
- Drilling in other materials using the quick-release chuck

Advantages

- Cordless combihammer for higher productivity through greater mobility
- Features a brushless motor for the highest performance in its class and superior system efficiency
- High battery capacity and powerful charger for short charging times, allowing a full day's work with just one battery
- Active Torque Control (ATC) system for maximum safety through automatic cut-out in critical situations
- Active Vibration Reduction (AVR) system for the lowest vibration in its class

Highlights

- Exchangeable chuck
- Versatility (4 mods – reverse function)
- Combi Design
- Brushless drive technology
- Lightweight high-capacity battery

First cordless combihammer ever, Hilti TE 30-A3



Hilti Lithium CPC - Cordless Power Care



Individual Cell Protection



Most robust Li-Ion cells



State of Charge (SOC)



Robust Packs



The new Hilti TE 30-A36 brings uncompromising reliability with the greatest possible independence from power outlets.



TE 30-A36 features Hilti's Active Torque Control (ATC) technology, ensuring maximum safety should the drill bit become snagged.



Battery is fully charged in only 42 minutes and provides power for drilling over fifty 16 x 150 mm holes in concrete.

Cordless combihammer

Hilti TE 30 A-36

A day work with no charge.

High battery capacity and powerful charger for short charging times, allowing a full day's work with just one battery.



Hilti full system.

Hilti tools and Hilti accessories are developed together, tested together and perfectly matched to each other, so you benefit in full from the Hilti Power Effect.



HILTI	2 Years
LIFETIME SERVICE™	NO COSTS
Lifetime	Lifetime
REPAIR COST LIMIT	MANUFACTURER'S WARRANTY

1+1=3
Total performance.
Hilti tools + Hilti accessories.

Performance data

Voltage	36 V
Rated voltage	36 V
Battery capacity	6 Ah
Battery type	Li-ion
Battery energy	216 Wh
Number of gears	1
Hammer drill bits (optimum dia. Range)	10 – 20 mm
Drilling dia. range for hammer drill bits	4 – 28 mm
Working mode	Hammer drilling, chiseling
Weight (Battery included)	5.3 kg
Single impact energy	3.6 J

We reserve the right to make technical changes.



Saudi Oger trusts Hilti tools and consumables in huge villas project.

Saudi Oger is one of the most important contractors in Saudi Arabia. Among their projects in KSA, one of the biggest is the construction of 6,000 villas for the National Guard in Riyadh. This challenging site needs top products and services to be able to finish on time and to keep the promised quality standards.

As part of the expansion of the Army facilities in KSA, Saudi Oger is building 6,000 villas for the National Guard in Riyadh. It started in 2012 and will finish in 2015, with a project value of 7 billion SAR. It includes not only villas, but also other facilities like mosques, offices, commercial buildings, parks, infrastructure, etc.

The villas are made of hard precast concrete, which is a challenge when the contractor needs to drill or cut it due to its hardness. Lower quality tools and consumables deliver simply a very low lifetime and a high rate of breakages.

This affects not only Saudi Oger's profitability, but also increases the construction time, due to the tool's low availability and slowness, and the administration costs of running purchases to replace tools and consumables.

To overcome this problem, Saudi Oger needed high-reliable, top quality tools and consumables, backed with the best service available. For this task, they chose Hilti, because of the long and successful history of common work in previous projects.

For the heavy drilling applications Saudi Oger purchased more than 100 Hilti

combihammers, especially to mention Hilti TE 70-ATC with Active Torque Control to avoid accidents due to drill bit sticks. The brand new cordless combihammer TE 30-A36 was tested and bought by the customer. Hilti unique drill bits TE-YX were extensively used because of their lifetime and robustness.

For light drilling Hilti corded and cordless rotary hammers were purchased, with the high performance TE-CX drill bits with new solid carbide head.

For demolition Saudi Oger purchased light and robust Hilti breakers, like TE 500, with hundreds of pointed and flat chisels TE-YP.

For the cutting applications Saudi Oger chose the Hilti angle grinders DCG 125 and DCG 230 with 30,000 universal cutting discs AC-D UP 115/230 mm.

For precast temporary support and installation Saudi Oger used in total

The National Guard Villas in this Riyadh project are made of precast panels.



Testimonial.



Mr. Vincent Lesage,
Assistant Project
Director from Saudi
Oger in the National
Guard 6,000 villas

project, shares his experience with Hilti products and services.

What were your company's needs in the project regarding to Hilti?

We were looking for products for all kind of drilling, demolition and rebaring applications

Why did you choose the Hilti solution?

We chose Hilti because of its high quality, performance and fast service. We also found full solutions within the same company.

Are you satisfied with Hilti's contribution?

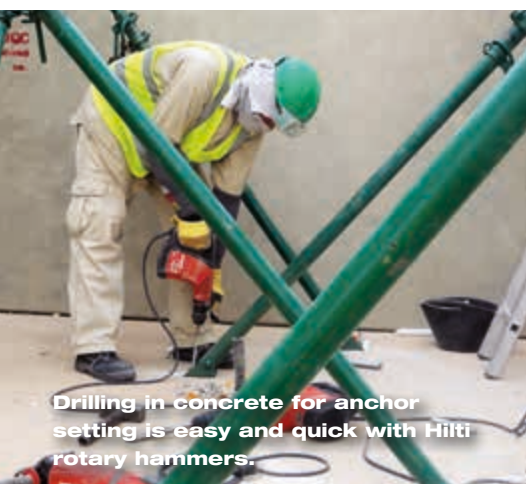
I am really satisfied with Hilti's contribution and we really appreciate working with it, especially because of the quick service we are receiving.

1 million Hilti HSV M16 and HKV M12 and M16 anchors.

Hilti's Key Project Managers, sales representatives and field engineers were regularly present in the project to support Saudi Oger with technical advice, on site operator trainings and solving all issues that can arise. Saudi Oger is especially

satisfied with the Hilti 2 years no cost warranty, including batteries, and the quick repair service.

Due to the valuable services offered by Hilti Saudi Arabia and the excellent time-saving solutions the customer had significant productivity gains in the project. ■



Drilling in concrete for anchor setting is easy and quick with Hilti rotary hammers.



The cutting applications were done successfully with Hilti angle grinders and discs.

Applications

Stud anchor HSA

- Safety relevant applications in uncracked concrete
- Railings, rackings and steel work

Stud anchor HSV

- Applications in uncracked concrete
- Handrails, fences and ornamental steel

Screw anchor HUS-H

- Highly productive and highly aesthetic solution for safety relevant applications in cracked and uncracked concrete
- Railings, balustrades, steelwork and facades

Advantages

Stud anchor HSA

- Reliable and fast installation with SIW 14-A/SIW 22-A and torque bar S-TB
- Best in class loads as well as edge and space distance
- Design flexibility with 3 embedment depths
- ETA approved for uncracked concrete

Stud anchor HSV

- Embedment depth mark for accurate installation
- Pre-assembled

Screw anchor HUS-H

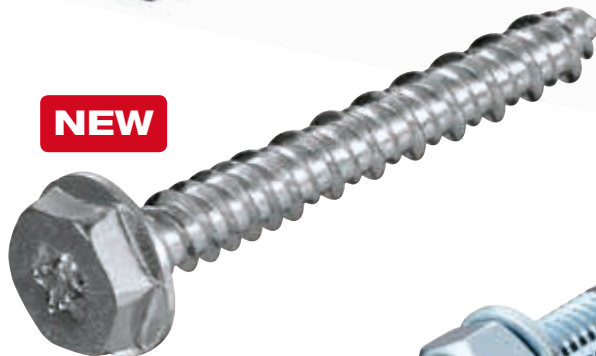
- Highest productivity
- Ease of installation
- Small drilling diameter
- Aesthetic hexagonal head finish

Fast and safe way to install anchors with precisely controlled torque.

Make your job faster: eliminate wonky manual anchor's tightening and associated risk of human mistake, due to over-tighten or under-tighten.



Stud anchor HSA



Screw anchor HUS-H



Stud anchor HSV



The HSA anchor has an embedment depth mark for accurate installation.



The easy and reliable solution for uncracked concrete – HSV.



Most productive fastening solution. Drill, drive, done - fast, easy and reliable – HUS-H.

Hilti Stud anchor range

Mechanical anchors



Only one approved by ETA solution for anchor installation with impact wrench tool.



S-TB




APPROVED



Get fast, convenient and reliable torquing with S-TB and SIW 22-A. The anchor will always get torqued correctly.

Performance data

	HSA	HSV	HUS-H
Diameter	M6-M20	M8-M16	8-14 mm
Number of embedment depths	3	2	3
Materials	Galvanised steel, hot dipped galvanised steel, stainless steel A2, stainless steel A4	Galvanised steel	Galvanised steel, hot dipped galvanised steel, stainless steel
Approvals	ETA-11/0374 CE 		ETA-08/0307 CE 

We reserve the right to make technical changes.



Hilti's direct fastening system saves the day in Haramain Station Rabigh

El Seif Engineering Contracting is involved in the construction of the Haramain Station in Rabigh. During the works El Seif is confronted with different challenges, as for example the installation of lightning rods on steel beams. Hilti Saudi Arabia provided the best solution to finish this application satisfactorily.

The Haramain High-Speed Rail Project is expected to cut down the amount of time taken to travel between Makkah and Madinah to two hours. It will also shorten the travel time between Jeddah and Makkah to half an hour. Once completed, the project will provide passengers with a view of the monumental architecture of Makkah and Madinah as they travel across the cities.

El Seif Engineering Contracting had to install lightning rods strips in the beams on the steel structure in the Rabigh station. They had to use special strips of brass 6500 m long all around the station. The

Haramain High-Speed Railway



The Haramain Station in Rabigh is expected to finish end of 2014 and will greatly contribute to ease the communication between Jeddah and King Abdullah Economic City KAEC.

Hilti X-BT is an innovative way of fastening to pre-painted steel without damaging the surface.



Consultant in charge Dar Al-Handasah didn't allow any procedures that penetrate the steel causing corrosion and the need of applying a new coating.

The contractor needed a solution from Hilti to make sure that the strips are fixed on the steel structure as per the consultant's instructions. Therefore, our

Hilti representative Mr. Mazen Al-Alam performed a demonstration of our DX 351-BT with X-BT nails, the results were so satisfying for the contractor that he wanted to try it on the actual steel structure and it was also successful. Afterwards a mock-up was done for Dar Al-Handasah.



El Seif's employees got an extensive on-site training in the Hilti's Direct Fastening system. The support of Hilti representatives in the projects was very valuable for the customer.

El Seif faced another problem when they needed the conduits over the strips to be fixed and not loose, by the help of Hilti field engineers, they came up with a solution that was easy to use and includes no cutting, welding or drilling, using the same DX 351-BT with X-BT nails. The results of using the DX 351-BT were very good because the fixation won't cause corrosion. The workers could use now a compliant system, fast and easy to use.

Our Hilti representative Mr. Mazen Al-Alam made on site operator trainings. Eventually El Seif ordered 2 DX 351-BT with X-BT nails and they were satisfied with the solution that Hilti offered. ■

Applications

Detections of objects:

- Rebar
- Metal objects
- Copper pipes
- Aluminum pipes
- Plastic pipes
- Electric cables
- Wood studs

Determination of the drill bit exit point

Advantages

- No costly repairs to damaged pipes or cables
- Fewer rebar hits
- Less drill bit wear
- Easy to use and learn
- Safety guaranteed

Highlights

- Detection using only one button
- Rough and robust design, adapted to the job site
- Clear indication with green/red LED
- Max. detection depth: rebar up to 180 mm, non-ferrous 80 mm

Avoid costly mistakes!

Save time and money.



The Hilti PS 30 detects rebar and pipes simply at the touch of a button.



The Hilti PS 35 finds the position and depth of reinforcing bars for an efficient anchor fastening.



The Hilti PS 38 Multidetector locates non-metal objects, such as plastic, wood, electric cables, in addition to ferrous elements.

Detection portfolio — One tool for each need.

On average, an object is hit or drilled through in almost every second hole. Objects are everywhere beneath the surface of concrete and masonry – with the safety of the worker at stake on the one hand and the risk of costly damage and delays in completion of the project on the other. Detection tools from Hilti tell you where problems can be expected and where you can drill or cut safely.

HILTI	2 Years
LIFETIME SERVICE™	NO COSTS
Lifetime	Lifetime
REPAIR COST LIMIT	MANUFACTURER'S WARRANTY

The easier



PS 30

- Depth rebar 120 mm
- Depth non-metal 80 mm
- 420 gr

Applications: Locates rebar, copper and aluminum pipes in concrete or masonry. Value for money tool.

Light tool

The accurate



PS 35

- Depth rebar 120 mm
- Depth non-metal 80 mm
- 450 gr

Applications: Locate rebar, copper and aluminum pipes and other materials in concrete or masonry. Determine position and depth of rebar. Professional tools.

Medium tools

The versatile



PS 38

- Depth rebar 120 mm
- Depth non-metal 80 mm
- 450 gr

The transpointer



PX 10

- Measuring range 0.05-1.35 m
- 275 gr

Applications: Determines the exit point when drilling through walls.

The powerful



PS 250

- Depth rebar 180 mm
- 9 image scans up to 30 m
- 1.4 kg

Applications: Rebar verification and analysis for quality control. Concrete coverage check. Generation of structural assessment reports. Large concrete areas scans.

Heavy tool



The Hilti PX 10 Transpointer determines the drill bit exit point, transfers the drilling starting point to the opposite side of the wall or floor.



The Hilti PS 250 Ferroskan is the leading portable detection system for reinforcement verification and large area depth of cover measurement. It transfers data to PC.

Hilti is present in remote projects in KSA

Contractors working in remote areas of Saudi Arabia face numerous difficulties. To the moving of their own employees and material we have to add the problems of many suppliers to give a good service in delivering products and repaired tools in a short time. Also many suppliers that aren't present in the area with salesmen or engineers aren't able to give a proper technical or commercial service to their customers.

Hilti Saudi Arabia is investing in resources on the ground to cover not only the main urban areas in KSA, but also medium and small locations, and even remote area projects. This gives contractors the possibility to pay cash running items directly in the project.

At the same Hilti improves its logistic and repair services in the Headquarters to meet the expectations of the customers far away. The fast and reliable direct delivery of products and pick-up of repair tools is especially appreciated.

Our Customer Service and Engineering Back Office are always available, as well as Hilti Online, which is 24/7 open for commercial or technical needs.

In the following examples, some customers explain how Hilti has supported them in their projects, where others aren't able to help adequately. ■



Eng. Mohammed AbdelAziz is Project Manager in the company HATCO working in the project Al Jouf University.

Are you facing problems working in a project located in a remote area? Which ones?

Of course we were facing problems working in a remote area. We didn't have the technical support considering the lacking of representatives and sometimes communicating on the phone just isn't enough. There's a lack of materials in the local market that takes a lot of time to bring the right

products from Riyadh to Al Jouf.

How is Hilti contributing to solve these problems?

Hilti provides us technical support on site. The direct delivery of the goods to the site is saving us a lot of time and money. Hilti's Technical specifications are one of the best in the market therefore we don't have to worry about the quality. Providing training to our employees to use Hilti's solution is also very important.

Are you satisfied with Hilti's contribution?

Very satisfied and looking forward to take advantage of the services that Hilti provides us.



Mr. Khalid Isam Mubark is Quality Manager in the company Al Fouzan working in the project King Faisal Medical City in Abha

Which problems are you facing working in a project located in a remote area?

We face issues mainly with manpower and resources (tools, equipment and special material). Not enough material suppliers can manage such big projects. Most of the suppliers are in main cities (Jeddah, Riyadh), which cost us more time and money.

How is Hilti contributing to solve these problems?

Hilti can provide the type of service and wide range of material which helps us to fulfil the project needs. Hilti representatives are always on call and available for quotations on the spot, technical support, training and demonstrations. They engage with all different departments in the project (Project manager, Purchasing manager, Engineers,



Warehouse and Consultant), coming up with solutions that really helped us save a lot of efforts. There's a great coordination between our head office and Hilti in Riyadh so we don't need to follow up on requests and PO's.

Hilti offers presentations on specified products and link them with the applications we have. Hilti's service includes pick up service from site for repair tools. This helped us to save time

instead of sending the tools to our head office then the head office sends them to the Hilti Showroom. Also the delivery time for goods is short and they come directly to the site.

Are you satisfied with Hilti's contribution?

I am satisfied, especially with prices agreement applied to all Al Fouzan branches, so we don't need to go back to head office and ask them to check the prices.



Eng. Wahid is Project Manager in the company Bin Sammar working in the project Hail General Hospital.

Are you facing problems working in a project located in a remote area? Which ones?

For sure we were facing some problems in such a remote area like this. We used to take a long time to purchase our materials



from Riyadh and sometimes we got non-suitable materials for some of our applications. The tools warranty we didn't use much considering the long distance to submit and collect from Riyadh.

How is Hilti contributing to solve these problems?

Now we have a good representative from Hilti, Mr. Shareif, who is on site regularly and contributes to solve our problems. The direct delivery and the direct pick up save us a lot of time and money. The immediate technical support on site solved us several issues.

Are you satisfied with Hilti's contribution?

Very much. Hilti is a pioneer to be everywhere, now in remote areas as well.



Mr. Vadukut Thomas George is Site Purchasing Manager in the company Gulf Elite working in the project Shaybah Gas in the Empty Quarter.

Are you facing problems working in a project located in a remote area? Which ones?

Yes, we are facing a problem of communication & accessibility with many suppliers. For instance getting quotations and follow up for the delivery, it all takes a lot of our time, because the suppliers are not responding promptly and at the same

time we face weak network coverage issues, so e-mail is the best way to communicate. Hilti Customer Service is our Business Partner. On the other hand we need Technical Support on Site for Tools & Engineering Solutions (Firestop & Installation Systems).

How is Hilti contributing to solve these problems?

The prompt response of Hilti's customer Service for Quotations & Delivery follow-up's and the Technical On Site support is really helping us to solve problems and execute the job as per ARAMCO standard smoothly. Hilti's Technical representatives frequently visit us in the Job site in Shaybah, Empty Quarter.



Are you satisfied with Hilti's contribution?

Yes, of course, we highly appreciate Hilti's support to us in projects like Shaybah, in a remote location. And we transfer our most of business to Hilti because of these valuable services.



Mr. Jomaa Al Hassan is Mechanical Engineer in the company Abdulrahman S Al Rashed Est. working in the project Jizan University.

Which problems are you facing working in a project located in a remote area?

Products are not always



available, because of the delay in the arrival of the orders from other companies. There is no support for the user to guide them how to use the products.

How is Hilti contributing to solve these problems?

Hilti contributes in solving these problems by providing an employee in the Jizan area, who offers Hilti products that meet customer's needs and guide us how to use them, also delivering the products directly to the site. Also to mention the two years no cost of the Hilti Lifetime Service.

Are you satisfied with Hilti's contribution?

Yes, I'm satisfied with the Hilti contribution and its representatives.

Hilti Lifetime Service

Outstanding products need outstanding services. Hilti offers a unique service warranty. On top of the repair savings, Hilti saves time for the customers due to its quick and professional Repair Service in Saudi Arabia.

No Costs for up to 2 years

You will bear no repair costs whatsoever for 24 months from the date of purchase. This includes labor costs, faulty parts and parts subject to wear and tear, servicing when indicated by the service indicator on the tool, functional check – adjustment and safety check.

HILTI		up to 2 Years
LIFETIME SERVICE		NO COSTS
Lifetime	Lifetime	
REPAIR COST LIMIT	MANUFACTURER'S WARRANTY	

Lifetime repair cost limit

After reaching the end of the up to 2-year no-cost period, you pay a maximum fixed amount. Should the repair cost remain below this limit you, of course, pay only the actual cost of the repair – over the entire life of your Hilti tool. Beyond this, as added confirmation of Hilti quality, any tool breakdown within the first 3 months after every paid repair will be repaired free of charge as in the cost-free period.

HILTI		2 Years
LIFETIME SERVICE		NO COSTS
Lifetime	Lifetime	
REPAIR COST LIMIT	MANUFACTURER'S WARRANTY	

Lifetime manufacturer's warranty

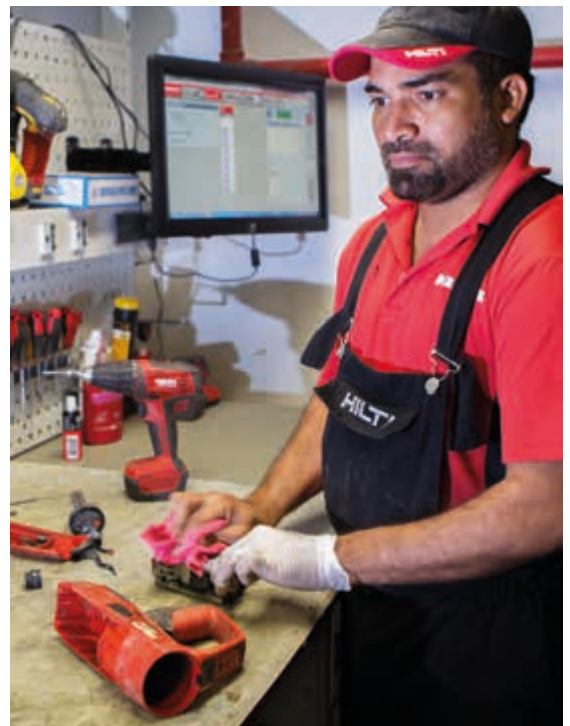
Hilti repairs or replaces, free of charge, all tools that suffer faults or defects as a result of faulty materials or manufacturing faults – over the entire life of the product.

HILTI		up to 2 Years
LIFETIME SERVICE		NO COSTS
Lifetime	Lifetime	
REPAIR COST LIMIT	MANUFACTURER'S WARRANTY	

Hilti Repair Center in Saudi Arabia



Located in Jeddah, 25 specialists handle more than 45,000 tool repairs every year, 60% of these repairs are cost-free because of the Hilti Lifetime Service warranty. Tools are repaired and returned to the customers in average 5 days only.





Hilti WSR 22-A Innovation even for Palm Trees

In a palm farm in Al Kharj belonging to Ministry of Agriculture, the Hilti Account Manager Khaled Al Jabal showed them that there is a new era for the cutting of Palm Trees. Today cutting of palm trees is done with traditional saws or gasoline saws. These methods are slow, too tiring and dangerous for the users. The Hilti electric cordless saw WSR 22-A is a light, high performing and reliable tool that delighted the workers in the palm farm and converted them to a newer stage of convenience and innovation. Hilti Cordless tools have very less breakdowns, very high battery reach and are covered by a full warranty for 2 years and above, including the batteries.

New Hilti Web Site, www.hilti.sa



Hilti customers demand the best - and Hilti delivers. That's why Hilti has completely re-designed its website to set the industry standard in innovative online solutions for customers in Saudi Arabia. The new Hilti Online is a one-stop point for all product needs, technical information, sales support and account management. Registered customers can place orders online, check their sales history and discounts, print invoices, check Hilti stock, live chat with the Customer Service, download technical documentation, and more.



Rail Summit in Riyadh

Saudi Arabia is actually building and planning very important rail and metro projects, like the Haramain Railway, North-South Railway, Riyadh Metro and many others. Hilti participated as sponsor in the May Summit in Riyadh, exhibiting solutions to rail and metro applications which need highly qualitative and technically innovative products. Hilti has been present in this type of job sites both in Saudi Arabia as in many other countries. The participants in the Summit were very interested in Hilti's information and mock-up's.

Engineering seminar



Hilti is committed to deliver the best quality products and services to the market. Firestop is one of the most critical applications in the projects which require excellent knowledge to save lives and assets. In this regard, Hilti technical team managed, with the coordination of Eng. Adel Shedid from the Engineering company Dar Al-Handasah, to do several Firestop training sessions to the team in Makkah in order to increase the competence in Firestop solutions and applications and the way of doing the correct installation. The sessions involved one hands-on training where the engineers did installation by themselves.



Nesma visits Hilti facilities

A group of managers from Nesma & Partners Co. consisting of: Mr. Sarkis Labaki, Mr. Nawras Badran, Engr. Syed Haider Ali, Engr. Erfan Fazal Ahmed Khan and Eng. Ahmed Mousa Mahdi AlFarra flew from the East coast to the West coast to visit the Hilti Headquarter. They were impressed from all the facilities and the methodology of work and how Hilti supports them in their daily requirements through Customer Service, Technical Support Office, Central Warehouse and the Repair Centre. They all were glad to see the growing level of investment in Hilti Saudi Arabia to assure the maximum level of service to Hilti customers.

Hilti Centres: Kingdom of Saudi Arabia

Kilo 14, King Fahd Street
Saad Abukhadra Building
21454, Jeddah
Phone 800 120 0013

King Abdul Aziz Street
11323, Riyadh
Phone +966 11 460 8974

Baladia Street
Al Shoaili Center
21454, Jeddah
Phone +966 12 667 8475

Old Industrial Area
Dahran street, Bawardi building
11323, Riyadh
Phone +966 11 447 5766

Old Jeddah Road, Imam Bukhari Street
Al Sultan Building
24231, Makkah
Phone +966 12 549 0773

Khobar-Dammam Highway
Dammam 1st Industrial area, Aba Hussain Building
31952, Khobar
Phone +966 13 810 0285

Jeddah Road – King Abdul-Aziz street
Mohammed AL-Juhani Building
41911, Yanbu
Phone +966 14 322 4661

1st Industrial City, street #114
Near Al Bayan Institute
31962, Jubail
Phone +966 13 340 4872

Abi- Zar Street
Souk Ohd Commercial Center, P.O. Box 3400
3400, Madina
Phone +966 14 835 1914

King Fahd Street
Next to Industrial Vocation Institute
31982, Hofuf
Phone +966 13 531 3671

Hilti. Outperform. Outlast.

Hilti Saudi Arabia
for Construction Tools

King Abdul Aziz Street
P.O. Box 5287 | 1Riyadh 11422
Toll Free Phone 8001200013
Toll Free Fax 8002445554
Sa.customerservice@hilti.com
www.hilti.sa
CR 1010278712
LLC Paid up capital SAR 39,230,000

شركة هيلتي العربية السعودية

لأدوات البناء

شارع الملك عبد العزيز

صندوق بريد 5287 الرياض 11422

الهاتف المجاني 8001200013

الفاكس المجاني 8002445554

Sa.customerservice@hilti.com

www.hilti.sa

سجل تجاري رقم 1010278712

شركة ذات مسؤولية محدودة - رأس المال المدفوع 39,230,000 ريال سعودي