



V3.0 RELEASE NOTES

Hilti ON!Track
Release date: 09.06.2018

1	Release Highlights	2
2	New Features	3
2.1	From Location and Quantity in Confirm Delivery	3
2.2	Confirm Transfer List Deletion on Mobile	4
2.3	Request a Repair for a Hilti Tool	6
3	Enhancements/Improvements	6
3.1	Assets/Consumables/Commodities ID Management Change	6
3.2	Alerts Improvements	11
3.3	Default Units translated	11
3.4	Product Description page changed to Product Info	12

1 Release Highlights

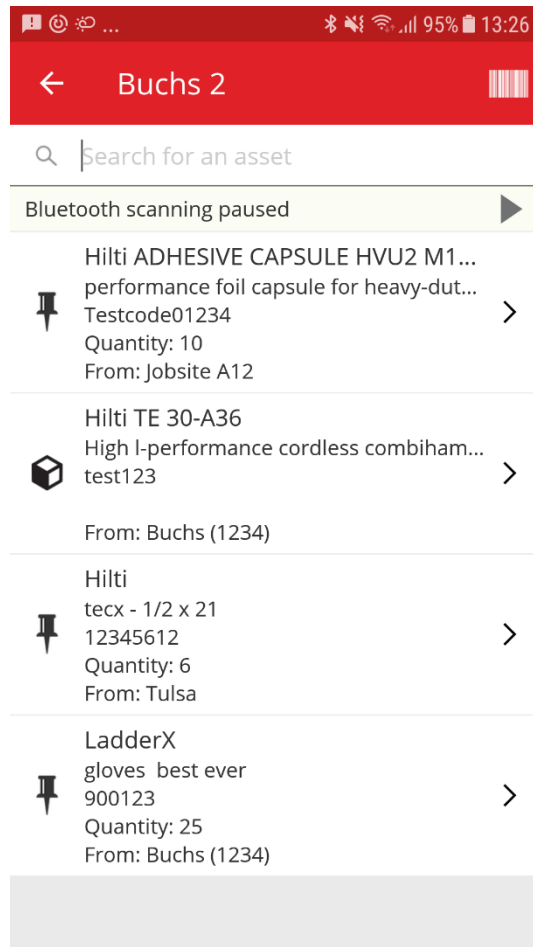
Disclaimer: After the new version, has been released, all the ON!Track users should log out first and log in back to ON!Track both on the mobile and the web application to be sure the new version of ON!Track will work as it's intended.

The V3.0 release focused on bug fixing and stability issues mainly, while additionally delivering some minor new features such as: improved Category and ID management for Assets/Consumables/Commodities, requesting a tool repair from ON!Track in countries where available and highlighting quantity and from location for Consumables/Commodities when transferring them and Confirm Delivery is enabled. Finally, one new language (Greek). The rest of this document will provide a more in-depth overview of what is included within the V3.0 software release.

2 New Features

2.1 From Location and Quantity in Confirm Delivery

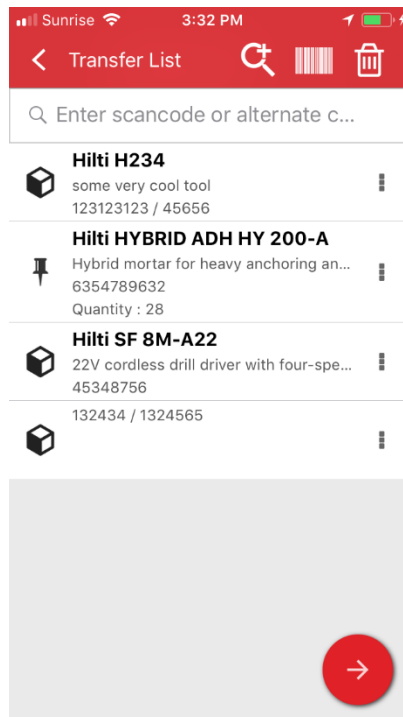
To improve transparency and for better usability from now on whenever a Consumable or a Commodity is included in a transfer while “Confirm Delivery” is enabled, the amount and the from location of the Consumable or Commodity which were transferred will be prompted and shown for better transparency of the transaction which needs to be confirmed.



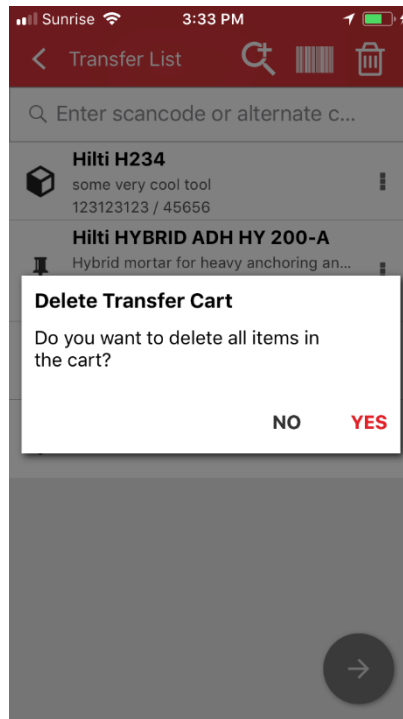
2.2 Confirm Transfer List Deletion on Mobile

From now on, whenever a transfer list is populated on Mobile with items to transfer from one location to another tapping on the “trash bin icon” will prompt a “Delete Transfer Cart” popup message to avoid mistakes. Even after tapping yes on the “Delete Transfer Cart” popup window an undo option will be available via a toast message in the bottom of the ON!Track application.

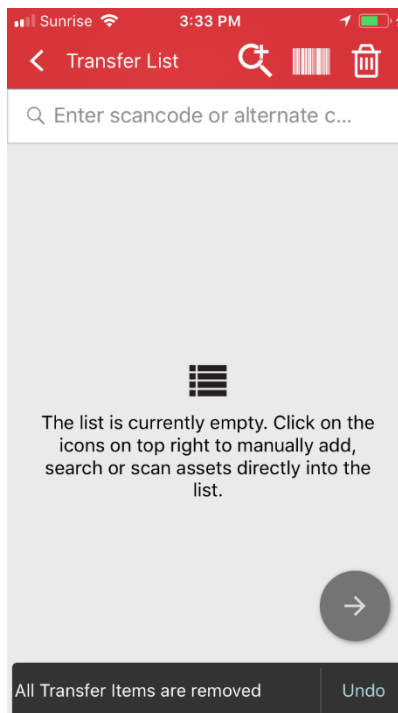
Transfer Cart list:



Delete Transfer Cart:

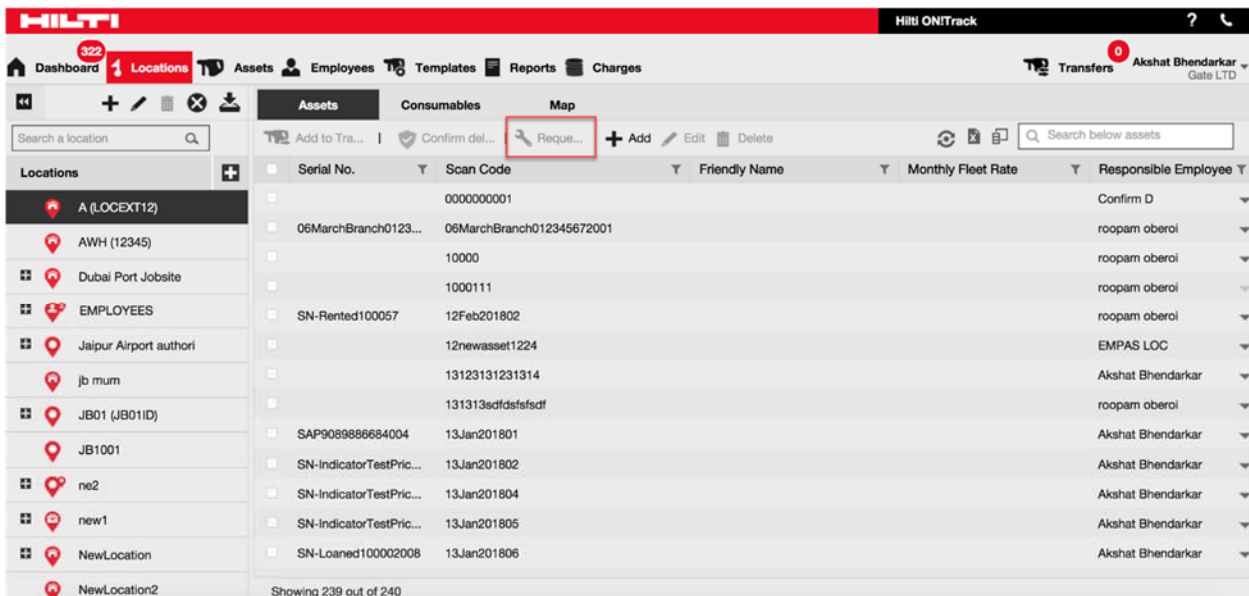


Undo after tapping Yes:



2.3 Request a Repair for a Hilti Tool

From now on for Hilti tools and Hilti fleet customers in GPDH2 countries it is now possible to request a repair for a Hilti tool straight from ON!Track itself. As of now the functionality is only enabled one by one, a service request cannot be ordered for multiple tools at a time, just one by one. To do so, simply select the tool in the web application which requires a service and click on the „request service” icon (a wrench logo) then the user will be re-directed to the local country specific Hilti Online webpage where he or she can log in with his or her Hilti Online username and password and proceed with the tool repair request. However if the user is already logged in to Hilti Online (in a separate tab for example), the repair request button will redirect straight to the repair request page on Hilti Online.



The screenshot displays the Hilti ON!Track web application interface. The top navigation bar includes the Hilti logo, the user name 'Akshat Bhendarkar', and the role 'Gate LTD'. The main navigation menu contains 'Dashboard', 'Locations', 'Assets', 'Employees', 'Templates', 'Reports', 'Charges', and 'Transfers'. The 'Assets' section is active, showing a table of assets with columns for Serial No., Scan Code, Friendly Name, Monthly Fleet Rate, and Responsible Employee. A 'Request' button (wrench icon) is highlighted with a red box in the top right of the assets table. The table lists various assets, including those with scan codes like 0000000001, 06MarchBranch0123..., 10000, 1000111, 12Feb201802, 12newasset1224, 13123131231314, 131313sdfdsfdfsdf, 13Jan201801, 13Jan201802, 13Jan201804, 13Jan201805, and 13Jan201806. The responsible employees listed are Confirm D, roopam oberoi, EMPAS LOC, and Akshat Bhendarkar. The interface also shows a search bar for locations and a search bar for assets below the table.

3 Enhancements/Improvements

3.1 Assets/Consumables/Commodities ID Management Change

For better ease of use and clarity the Assets/Consumables/Commodities ID management have been changed. Thus, the former Asset Details view have been changed to Category & IDs.

3.1.1 Web Changes

Old Web View:

New Web View:

As you can see from above the asset details fields have been re-arranged to give a better and easier overview about an Asset's/Consumable's/Commodity's attributes.

Category & IDs section includes:

- Category
- Scan Code Type
(This is a new field by default the type is always 'Barcode' for Consumables and Commodities, for Asset the type options 'Barcode' and 'Hilti Smart Tag' are available in countries where the AI T380 Hilti Smart Tags are already being sold.)
- Scan Code
- Alternate Code
- Serial Number

Details section include for Assets:

- Template Name
- Manufacturer
- Model
- Description
- Asset Status
- Friendly Name

For Commodities:

- Manufacturer
- Model
- Description
- Quantity
- Friendly Name

For Consumables:

- Manufacturer
- Model
- Description
- Unit
- Friendly Name

The screenshot displays the Hilti ON!Track web interface. On the left, a table lists assets with columns for Scan Code, Alternate Code, Manufacturer, and Model. The second row is highlighted, showing Scan Code 45348756, Manufacturer Hilti, and Model SF 8M-A22. On the right, a detailed view for the selected asset is shown, titled '22V Cordless Drill Driver With Four-Speed Gearing...'. The 'Asset Details' section includes an image of the drill and a list of attributes. The 'Scan Code Type' attribute is highlighted with a red box and is set to 'Barcode'.

Scan Code	Alternate Code	Manufacturer	Model
154255		Hilti	SF 14-A
45348756		Hilti	SF 8M-A22

Asset Details

22V Cordless Drill Driver With Four-Speed Gearing...

Asset Details

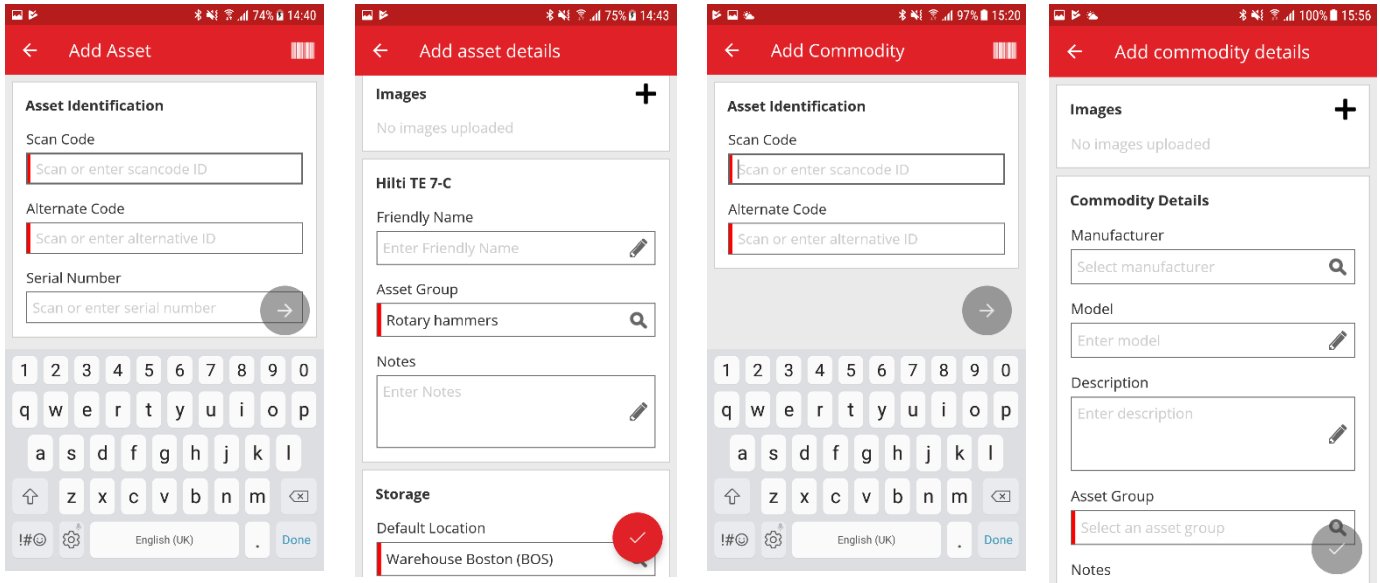
Friendly Name : Cordless1 metal
Responsible Employee : Szilard Szoeacs
Current Location : Buchs (1234)
Current Location State : Active
Status : Operational
State : In Warehouse
Asset Group : Cordless
Scan Code : 45348756
Scan Code Type : Barcode
Serial Number : 123456789
Asset Category : Asset
Description : 22V cordless drill driver with fo...
Model : SF 8M-A22

The Scan Code Type will be always visible on the Asset Side Panel as well.

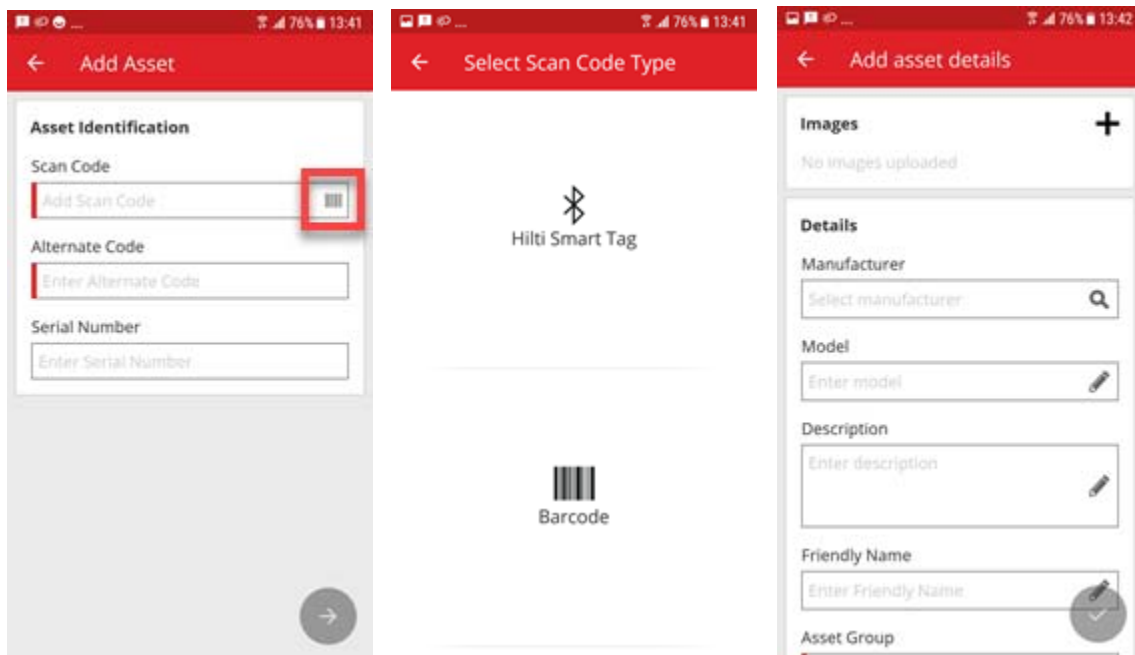
3.1.2 Mobile Changes

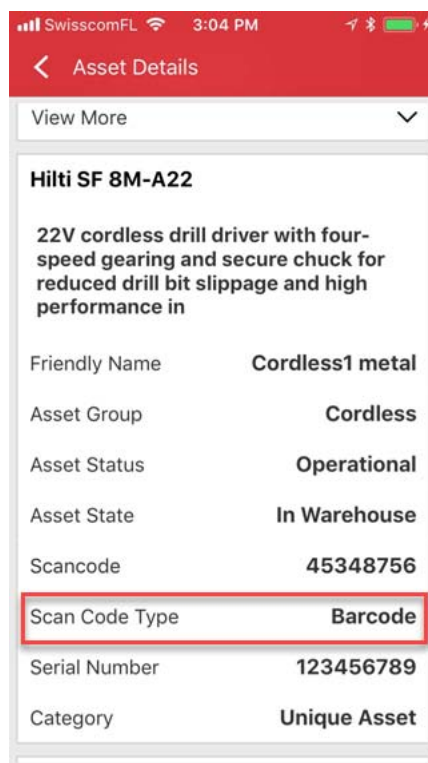
On the mobile application when adding a new Asset, the Add Hilti Item option is hidden from now on for SAP ByDesign countries. When adding an Asset, the barcode scanner usage is mandatory from now whenever the “Scan Code field” wishes to be populated. The “Alternate Code field” still could be edited manually. The Asset Details/Commodity Details screens have been adjusted to reflect the changes on the Web also.

Mobile Old View:



Mobile New View:





The Scan Code Type will be always visible in the Asset Details menu section.

3.2 Alerts Improvements

The Alerts module have been re-worked to eliminate various alert scheduling issues which were recurring previously.

3.3 Default Units translated

The Introduced default units with the V2.9 release have been translated to supported languages, such as:

- EACH
- BOX
- CANS
- LBS
- TONS
- SHEETS
- FEET
- YDS
- METERS

3.4 Product Description page changed to Product Info

The Product Description page's contents have been updated.