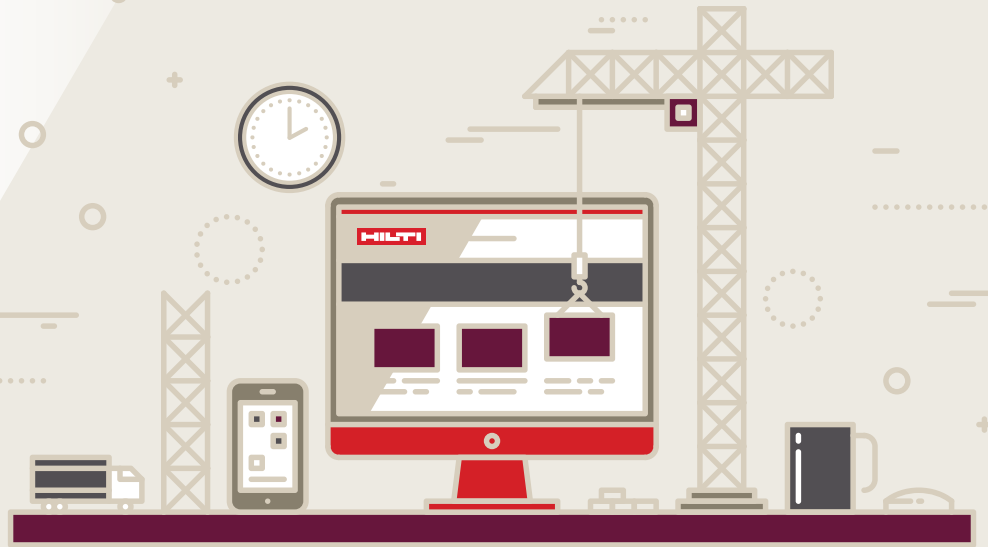




OUR NEW WEBSITE FEATURES

More intuitive than ever



ENHANCING YOUR ONLINE EXPERIENCE

Recommended Products:

Find recommended products based on buying behaviour:

- Previous 12-months Purchase

View a full list of your transactions and all items bought over the 12 months.

For example: If a user bought a specific anchor during the past 12 months and did it in 3 different time periods; the list will show a summation of the total of anchors bought.

Based on the buying behavior, the user will be categorized in the trade he belongs to and what products are usually bought. The product range will also be displayed if the user previously bought from the product range.

Where will the recommended products be displayed on the Hilti website?

- Home Page and Empty Shopping Cart:

First set of recommendations will be displayed as a full list from the item range. Once the user clicks on it, it will redirect to the full page of the product range.

- My Account – Company List

The second set of recommended products will be in the account area under the company list.

HILTI PRODUCTS / SERVICES / ENGINEERING / COMPANY / CAREERS

QUICK ACCESS

- Downloads >
- Hilti Blog >
- Track Your Tool Repairs >
- Your purchased items >
- Delivery status >
- My favorite lists >
- My orders >
- Repairs >

QUICK ITEM ENTRY

Add products quickly to your cart with the item number.

Example: 3783799

RECOMMENDED PRODUCTS

- TE 4-A22**
22V cordless rotary hammer featuring low weight for superior handling in serial applications.
- AG 125-A22 (2)**
Cordless angle grinder with brushless motor, used with 22 V battery for everyday cutting and grinding with discs up to 125 mm diameter.
- SCW 22-A**
22V cordless circular saw featuring low weight, for cutting materials up to 37 mm thick.
- SC 70W-A22**
22V cordless circular saw for cutting thicknesses up to 70 mm.

Visit your Hilti website to find out more.



www.hilti.group

OUR NEW WEBSITE FEATURES



New Product Page

The new and improved layout will allow the user to:

- Identify additional relevant items from the range
- Check different price options
- Enter specific order quantity
- Merging range and item information

The tool will merge range and item information to provide the customer with clear visibility of the item based on the specific package content, size, diameter, and length.



NEW FEATURES LAUNCHED

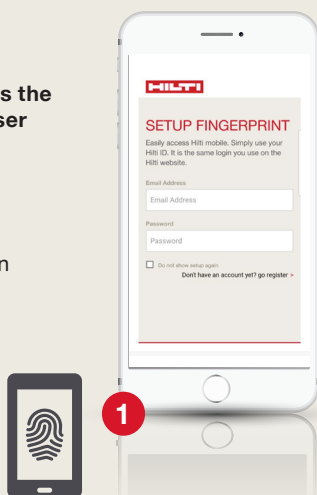
Visit your Hilti website to find out more.



Mobile App 2.0

The new Mobile app. 2.0 offers the customers a simplified and user friendly interface:

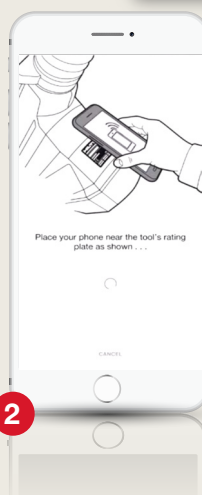
- 1 Biometric Authentication
- 2 New Tool Management
- 3 New Product Search Function



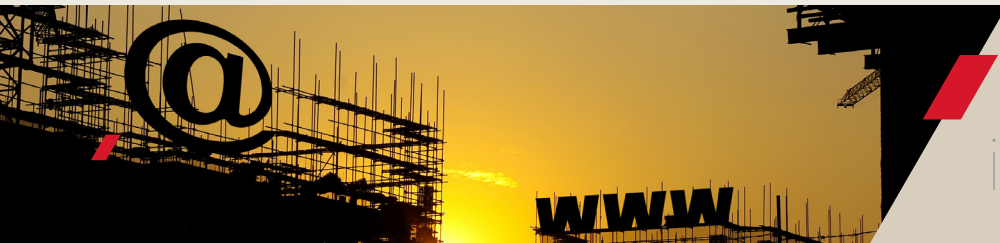
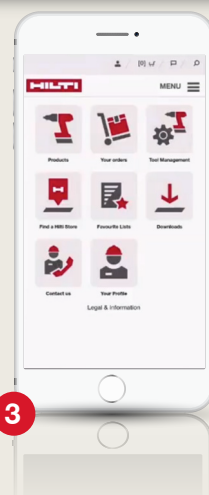
1



2



3



FIND OUR HILTI APP

iOS



www.hilti.group